



Flex Pocket

Quick Start Guide

Kurzanleitung / Instructions de démarrage

Guía de inicio rápido / Snelstartgids

clover.com/help



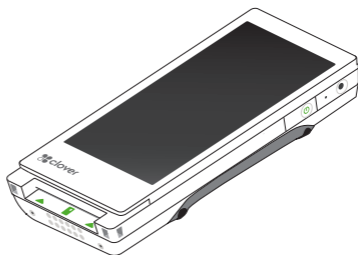
Included

Im Lieferumfang

Inclus

Se incluye

Inclusief



Select regions

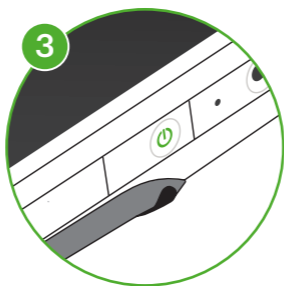
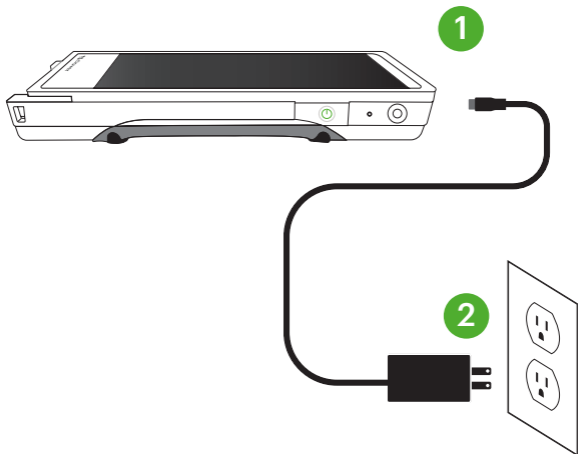
Ausgewählte Regionen

Certaines régions

Algunas regiones

Sommige regio's





FCC Part 15

This device complies with Part 15 of the FCC Rules. Operation is subject to the following two conditions: (1) This device may not cause harmful interference, (2) This device must accept any interference received, including interference that may cause undesired operation.

FCC Part 15 Class B-specific

Note: This equipment has been tested and found to comply with the limits for a Class B digital device, pursuant to part 15 of the FCC Rules. These limits are designed to provide reasonable protection against harmful interference in a residential installation. This equipment generates, uses and can radiate radio frequency energy and, if not installed and used in accordance with the instructions, may cause harmful interference to radio communications. However, there is no guarantee that interference will not occur in a particular installation. If this equipment does cause harmful interference to radio or television reception, which can be determined by turning the equipment off and on, the user is encouraged to try to correct the interference by one or more of the following measures:

- Reorient or relocate the receiving antenna.
- Increase the separation between the equipment and receiver.
- Connect the equipment into an outlet on a circuit different from that to which the receiver is connected.
- Consult the dealer or an experienced radio/TV technician for help.

FCC Warning

Changes or modifications not expressly approved by the party responsible for compliance could void the user's authority to operate the equipment.

FCC Radiation Exposure Statement

This device must not be co-located or operating in conjunction with any other antenna or transmitter.


This device has been tested and meets FCC RF exposure guidelines. Use with an accessory that contains metal may not ensure compliance with FCC RF exposure guidelines.


Regulatory information in the E-label

To find the regulatory information about your Flex, go to the Home screen and follow these steps.

1. Select "Settings"
2. Select "About device"
3. Select "Regulatory labels"

Argentina

 Este producto utiliza para su funcionamiento una fuente de alimentación, modelo S018BAM0500200 marca Clover con las siguientes características técnicas: Entrada: AC 100-240V, 50/60Hz, 0.4A, Cl. II; Salida: DC 5V, 2A, que ha sido certificada para su utilización en el mercado argentino.

 Conectar una fuente diferente a la provista podría ocasionar un incendio o choque eléctrico. No utilice una fuente diferente a la provista con el equipo.

Innovation, Science and Economic Development Canada (ISED) statement: CAN ICES-3 (B)/NMB-3(B)

This device complies with ISED's licence-exempt RSSs. Operation is subject to the following two conditions:

- (i) This device may not cause harmful interference, and
- (ii) This device must accept any interference received, including interference that may cause undesired operation.

Le présent appareil est conforme aux CNR d'ISED applicables aux appareils radio exempts de licence. L'exploitation est autorisée aux deux conditions suivantes:

- (i) le dispositif ne doit pas produire de brouillage préjudiciable, et
- (ii) ce dispositif doit accepter tout brouillage reçu, y compris un brouillage susceptible de provoquer un fonctionnement indésirable.

Caution

- (i) The device for operation in the band 5150-5250 MHz is only for indoor use to reduce the potential for harmful interference to co-channel mobile satellite systems;
- (ii) Where applicable, antenna type(s), antenna model(s), and worst-case tilt angle(s) necessary to remain compliant with the e.i.r.p. elevation mask requirement set forth in section 6.2.2.3 shall be clearly indicated.

Avertissement

Le guide d'utilisation des dispositifs pour réseaux locaux doit inclure des instructions précises sur les restrictions susmentionnées, notamment:

- (i) les dispositifs fonctionnant dans la bande 5150-5250 MHz sont réservés uniquement pour une utilisation à l'intérieur afin de réduire les risques de brouillage préjudiciable aux systèmes de satellites mobiles utilisant les mêmes canaux;
- (ii) lorsqu'il y a lieu, les types d'antennes (s'il y en a plusieurs), les numéros de modèle de l'antenne et les pires angles d'inclinaison nécessaires pour rester conforme à l'exigence de la p.i.r.e. applicable au masque d'élévation, énoncée à la

section 6.2.2.3, doivent être clairement indiqués

Radiation Exposure Statement

- (i) To comply with the Canadian RF exposure compliance requirements, this device and its antenna must not be co-located or operating in conjunction with any other antenna or transmitter.
- (ii) This device has been tested and meets RF exposure guidelines when used with an accessory that does not contain any metal. Use of other accessories may not ensure compliance with RF exposure guidelines.

Déclaration d'exposition aux radiations

- (i) Pour se conformer aux exigences de conformité RF canadienne l'exposition, cet appareil et son antenne ne doivent pas être co-localisés ou fonctionnant en conjonction avec une autre antenne ou transmetteur.
- (ii) Cet appareil a été testé et respecte les directives sur l'exposition aux RF lorsqu'il est utilisé avec un accessoire sans métal. L'utilisation d'autres accessoires peut ne pas garantir la conformité aux directives d'exposition aux RF.

Regulatory information in the E-label

To find the regulatory information about your Flex, go to the Home screen and follow these steps.

1. Select "Settings"
2. Select "About device"
3. Select "Regulatory labels"

Informations réglementaires dans l'étiquette électronique

Pour trouver les informations réglementaires concernant votre Flex, accédez à l'écran d'accueil et suivez ces étapes.

1. Sélectionnez « Paramètres »
2. Sélectionnez « À propos de l'appareil »
3. Sélectionnez « Étiquettes réglementaires »

EU Declaration of Conformity

Hereby, Clover Network, LLC declares that the radio equipment type, C407 is in compliance with Directive 2014/53/EU. The full text of the EU declaration of conformity is available at the following internet address:

eu.clover.com/eu-compliance

The frequency band and the maximum transmitted power in EU are listed below:

WWAN

LTE Band1: 23 dBm (Conducted)
LTE Band3: 23 dBm (Conducted)
LTE Band5: 23 dBm (Conducted)
LTE Band7: 23 dBm (Conducted)
LTE Band8: 23 dBm (Conducted)
LTE Band20: 23 dBm (Conducted)
LTE Band28: 23 dBm (Conducted)
LTE Band40: 23 dBm (Conducted)

CE max SAR

Body: 1.683W/Kg
Limb: 3.855W/Kg

NFC

-1.64dBuA/m @10m

WLAN

2400MHz-2483.5MHz: 20 dBm (EIRP)
5150MHz-5250MHz: 23 dBm (EIRP)
5250MHz-5350MHz: 23 dBm (EIRP)
5470MHz-5725MHz: 23 dBm (EIRP)

Restrictions in

AT/BE/BG/CZ/DK/EE/FR/DE/IS/IE/IT/EL/ES/CY/LV/LI/LT/LU/
HU/MT/NL/NO/PL/PT/RO/SI/SK/TR/FI/SE/CH/UK(NI)/HR/UK.
5150MHz-5350MHz is for indoor use only.

Caution: Exposure to Radio Frequency Radiation

This product complies with EU requirements regarding restriction of exposure of persons to radio-frequency energy (RF) emitted by telecommunication and radio devices as it is designed and manufactured in such a way as not to exceed the exposure limits indicated by the European Union Commission. The permitted SAR limit for the general population is 2.0 W/Kg for body and 4.0 W/Kg for limb. This limit guarantees an ample safety margin that protects all persons regardless of age and health condition. SAR is measured with the device at 5mm to the body and at 0mm to the extremity, while transmitting at the highest certified output power level in all frequency bands of the device. The highest SAR level recorded for this model was equal to body 1.683W/Kg & limb 3.855W/Kg.

CE RF Exposure Compliance

This device meets the EU requirements (1999/519/EC) and the International Commission on Non-Ionizing Radiation Protection (ICNIRP) on the limitation of exposure of the general public to electromagnetic fields by way of health protection.

This device is restricted to indoor use only when operating in the 5150 to 5350 MHz frequency range.

Clover Flex Pocket

Model Number: C407

Patent

clover.com/patents

Clover Network, LLC
415 N Mathilda Ave
Sunnyvale, CA 94085, USA

EU Importer:
Marketplace Merchant Solutions Ltd
Unit 9, Richview Office Park
Clonskeagh, Dublin 14, Ireland



Waste Electrical and Electronic Equipment-WEEE

NOTE: This product is covered electronic equipment under the European Union's Waste from Electrical and Electronic Equipment ("WEEE") Directive (2012/19/EU). The WEEE Directive requires that covered equipment be collected and managed separately from typical household waste in all EU member states. Please follow the guidance of your local environmental authority or ask the shop where you purchased the product for collection or recycling options.



HDYJ7002010-3B